

AgriLIFE EXTENSION

Texas A&M System

HAND SIGNALS FOR MACHINERY OPERATION

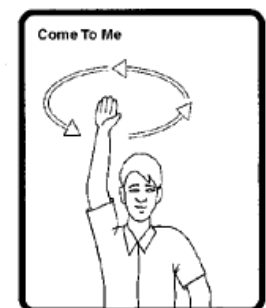
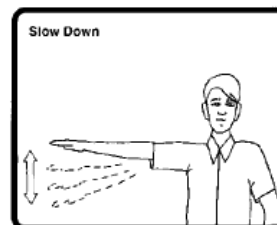
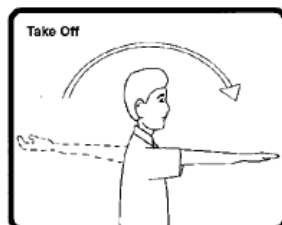
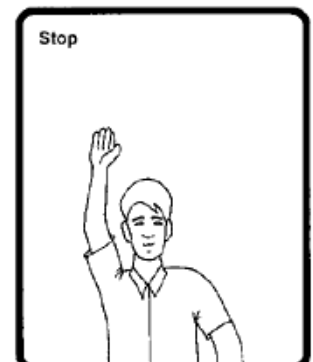
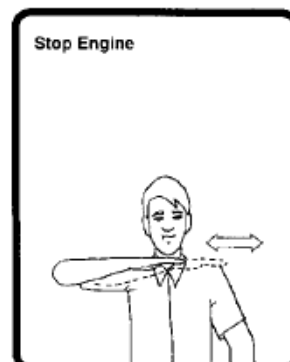
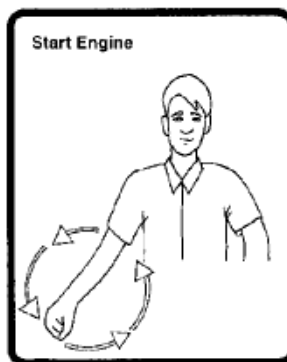
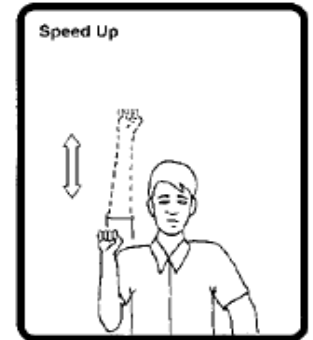
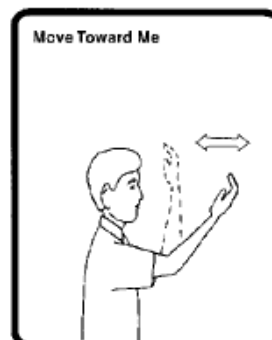
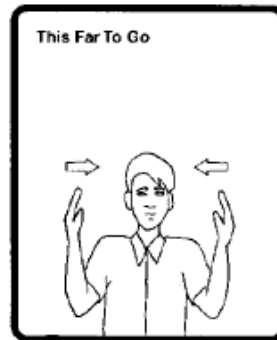
David W. Smith, Extension Safety Program

Hand signals have been used by the military, construction workers and factory laborers as a means of communication when voice communication is not possible. Consistent hand signals are essential when people must work together in noisy, hazardous work environments. Hand signals can also make work safer in the agriculture industry.

Backing tractors and hitching farm implements is commonly assisted by a second person who directs the tractor operator while standing on the ground. This is dangerous when the person directing the operator is standing between the tractor and implement. Because of the loud tractor noise, using uniform hand signals is essential to ensure safety.

Using a uniform set of hand signals, known by all workers is the key to safety. Otherwise, miscommunication is likely.

Farm supervisors should learn and teach hand signals to all workers. Farm workers should be required to demonstrate and use these signals on a regular basis. Farm family members should also practice using consistent signals.



These signals were developed by the Indiana Farm Safety Council, refined by the National Institute for Farm Safety, and then adopted by the Society for Engineering in Agricultural, Food, and Biological Systems as ASAE Standard ASAE S351, Hand Signals for use in Agriculture.